

# GFS-STEALTH GEN3

## SOLAR PATHWAY LIGHT



**7W / 15W**  
1,402lm / 2,805lm



**ALL-IN-ONE**  
standalone design

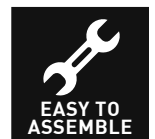
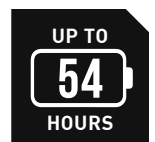


Designed in Australia, the GFS-STEALTH is a high performance, all in one solar light. Heavy duty die-cast aluminium construction with tough marine grade powder coating and stainless fixtures ensures reliable performance in the harshest environments.

The elegant design offers a solar powered alternative to conventional hard-wired lighting in a sleek, ultra-modern package.

### APPLICATIONS

- Pathways
- Car Parks
- Industrial
- Commercial
- Marinas
- Jetties
- Parks
- Recreation



## SPECIFICATIONS

**MODEL** GFS-STEALTH

## OPERATING PROFILE / OPERATION MODES

Standard operating mode is - **Sensor mode** - Unit operates at 1402lm until movement is detected then increases illumination up to 100% (2805lm) until 30 seconds after movement is no longer detected. **NOTE:** Configurable TIMER settings for ON / OFF / DIM are available upon request.

## LED

Type	CREE XP-G LED
Watts (Light Output)	15W / 7W (standby)
Lumens	2805lm (Boost Mode) / 1402lm (Normal Operation - Dimmable)
CCT (Colour Temperature)	4000K (standard) / 3000K (optional)
Motion Sensor (PIR)	6m / 20" detection zone (360°) Activates for 30 seconds
Optics	T3 (Standard) 135° x 85°   T5 (Optional) 110° x 135°

## BATTERY

Autonomy	54 hours (4.5 nights)*
Battery Type / Capacity	LiFePo <sub>4</sub> 12.8v 32Ah (409.6Wh)

## SOLAR PANEL

Watts (p) / Type	50W N type monocrystalline with edgeless frame design
Efficiency	24%

## UNIT

Material	Die-cast Aluminium chassis with TIGER Drylac® marine grade powder coating and stainless steel fixtures
Mounting	7° panel angle with 60mm spigot / 2-3/8" OD tenon pole mount bracket
Sail Area / EPA	0.1146m <sup>2</sup> / 1.2333 sqft
Product Dimensions	540L x 540W x 66H (mm) / 21"L x 21"W x 2.59"H
Product Weight	Light Fixture : 17.2kg / 37.9 lb Pole Mount Bracket (PMB): 4.5 kg / 9.9 lb
Package Dimensions	Box: 620mm x 620mm x 182mm / 24.4" x 24.4" x 7.1" Pole Mount Bracket : 590 x 260 x 200mm / 23.2" x 10.23" x 7.87" Wall Mount Bracket: 590 x 260 x 100mm / 23.2" x 10.23" x 3.93" Pole: 3000 x 76 x 76mm x / 118.1" x 3" x 3" (2 sections)
Package Weight	Boxed Stealth: 21.25 kg / 48.8 lb Pole Mount Bracket (PMB): 5.65 kg / 12.5 lb Wall Mount Bracket (WMB): 6 kg / 13.2 lb spigot Pole: 20.15 kg / 44.4 lb (top + bottom)

## ENVIRONMENTAL

Operating Temp. Range	-20°C to 70°C / -4°F to 158°F
IP Rating	IP-65

## WARRANTY

Warranty Period	10 years (Battery)* / 5 years (Unit) / 25 years (Solar Panel)
-----------------	---

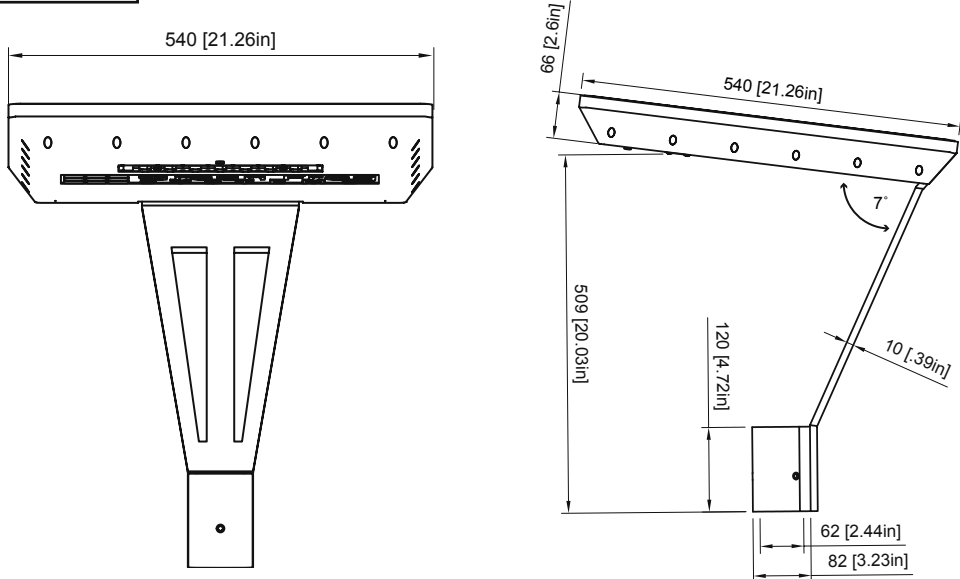
## OPTIONS

Dry bury hot dipped galv pole	6m / 20ft total height - 2 sections, powder coated black 60mm / 2-3/8" spigot
Spigot adaptor	76mm / 3" OD
3000K CCT Conversion	Custom modification available - Please Enquire

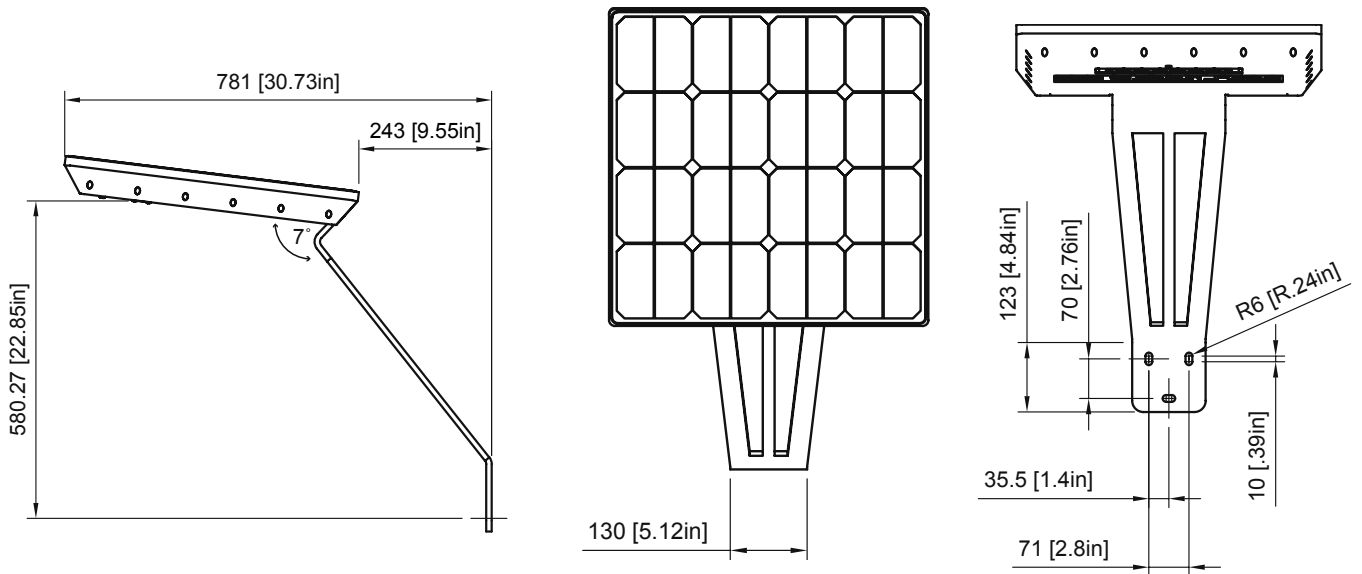
\*Based on fully charged battery at 1402 lumens / full warranty information is available at >> [greenfrogsystems.com.au/warranty](http://greenfrogsystems.com.au/warranty)

## MOUNTING OPTIONS / PRODUCT DIMENSIONS

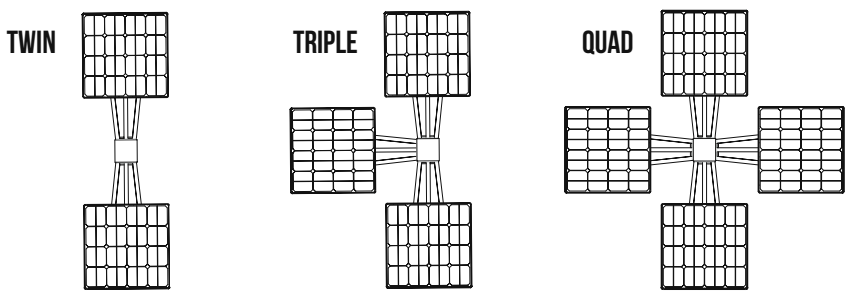
### POLE MOUNT



### WALL MOUNT

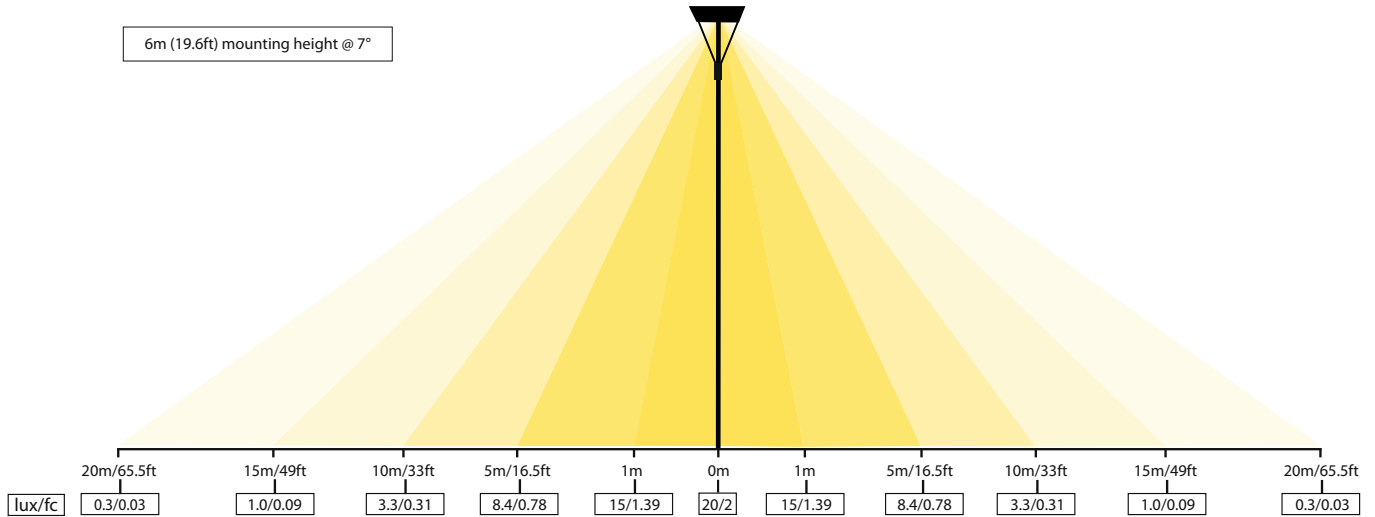


### OTHER CONFIGURATIONS

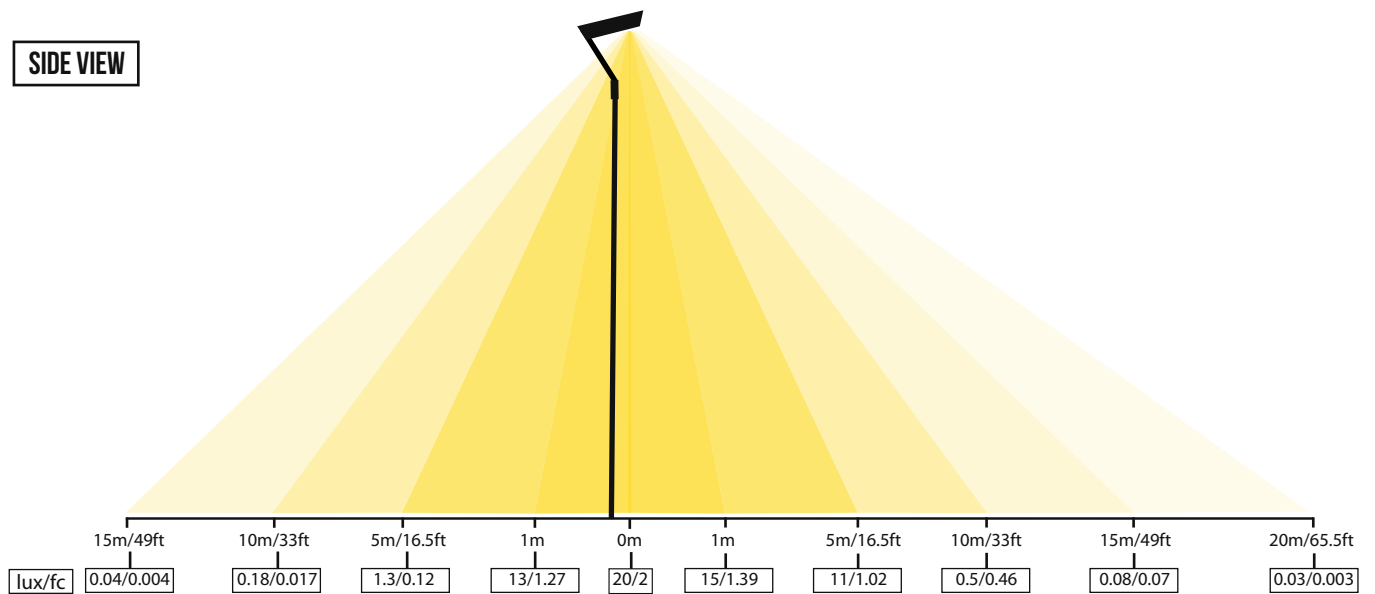


## LIGHT DISTRIBUTION

### FRONT VIEW

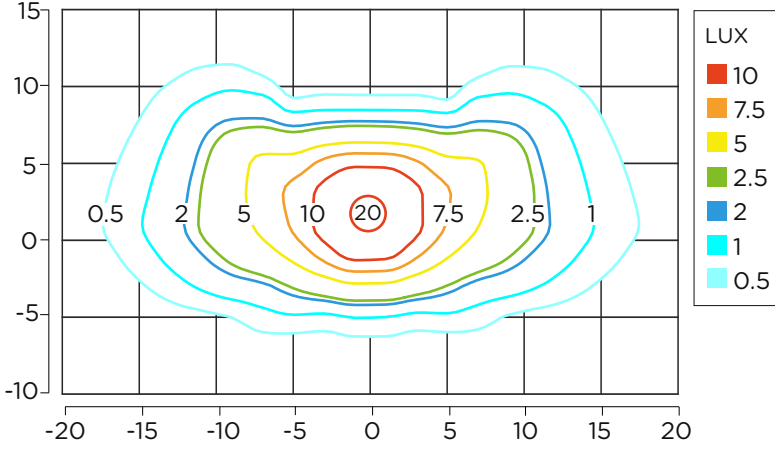


### SIDE VIEW

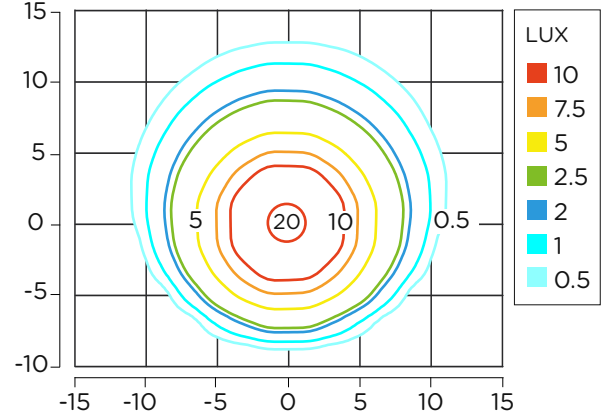


## PHOTOMETRICS

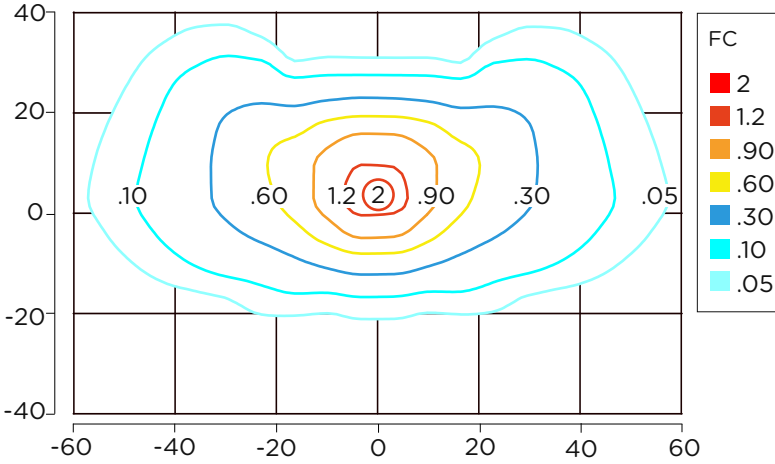
**METRES / LUX** TYPE 3 LENS (7° FIXED TILT) 6m MH



TYPE 5 LENS (7° FIXED TILT) 6m MH



**FEET / FOOT CANDLE** TYPE 3 LENS (7° FIXED TILT) 19.69FT MH



TYPE 5 LENS (7° FIXED TILT) 19.69FT MH

